



**CONSORZIO D'AMBITO
TERRITORIALE OTTIMALE
CATANIA ACQUE**







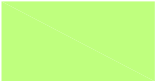
**ATO 2
CATANIA**

**COMPLETAMENTO DEL DEPURATORE
CONSORTILE DI MASCALI ED ESTENSIONE
DELLA RETE FOGNARIA**

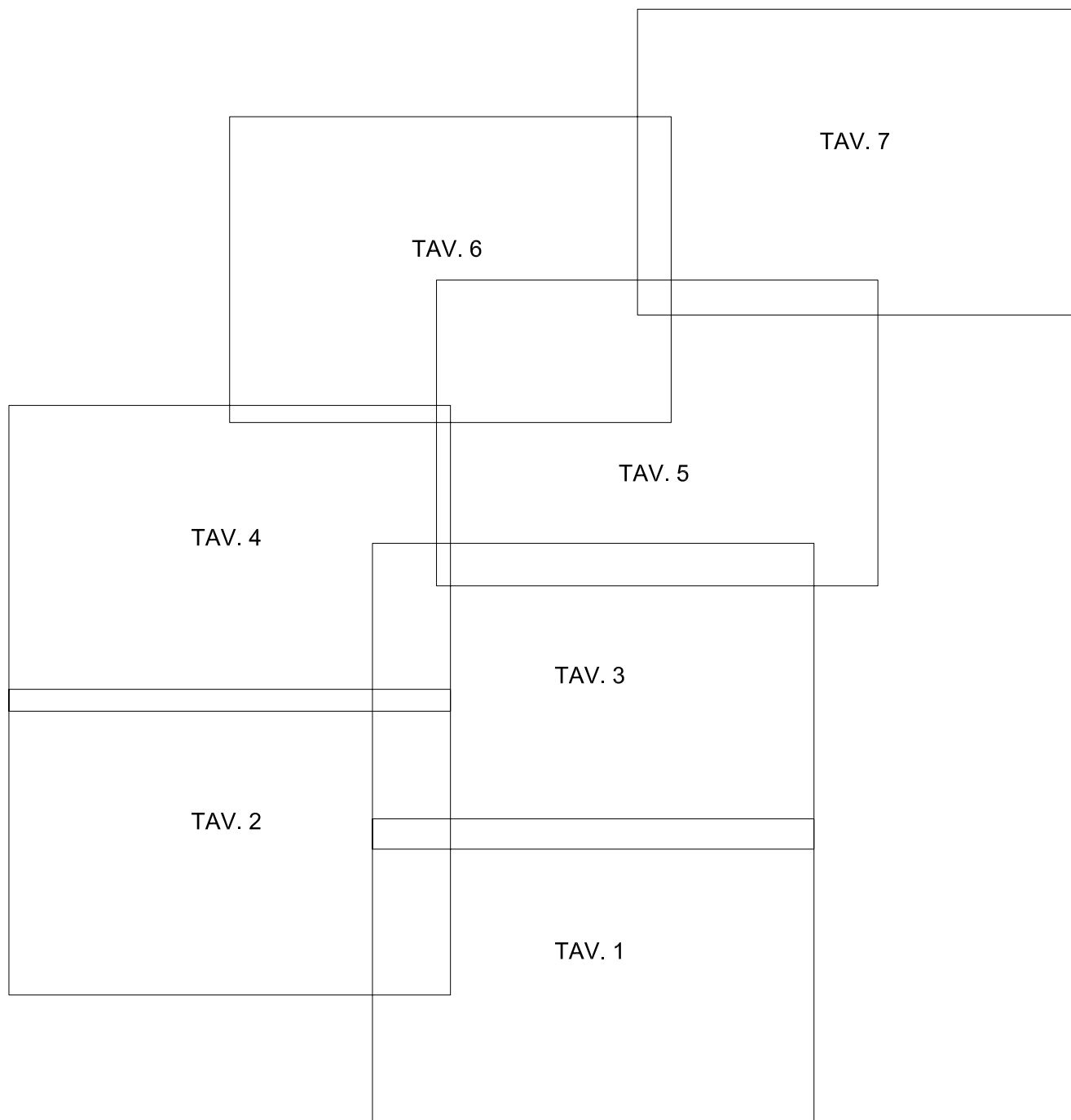
<p>Allegato:</p> <p>A</p>	<p>Oggetto:</p> <p>AEROFOTOGRAMMETRIA</p>	<p>Scala: 1:10.000</p> <hr/> <p>Data: Settembre 2012</p>
----------------------------------	--	--

IL DIRETTORE GENERALE
ATO 2 CATANIA
E R.U.P. DELL'INTERVENTO
F.to Dott. Ing. Laura Ciravolo

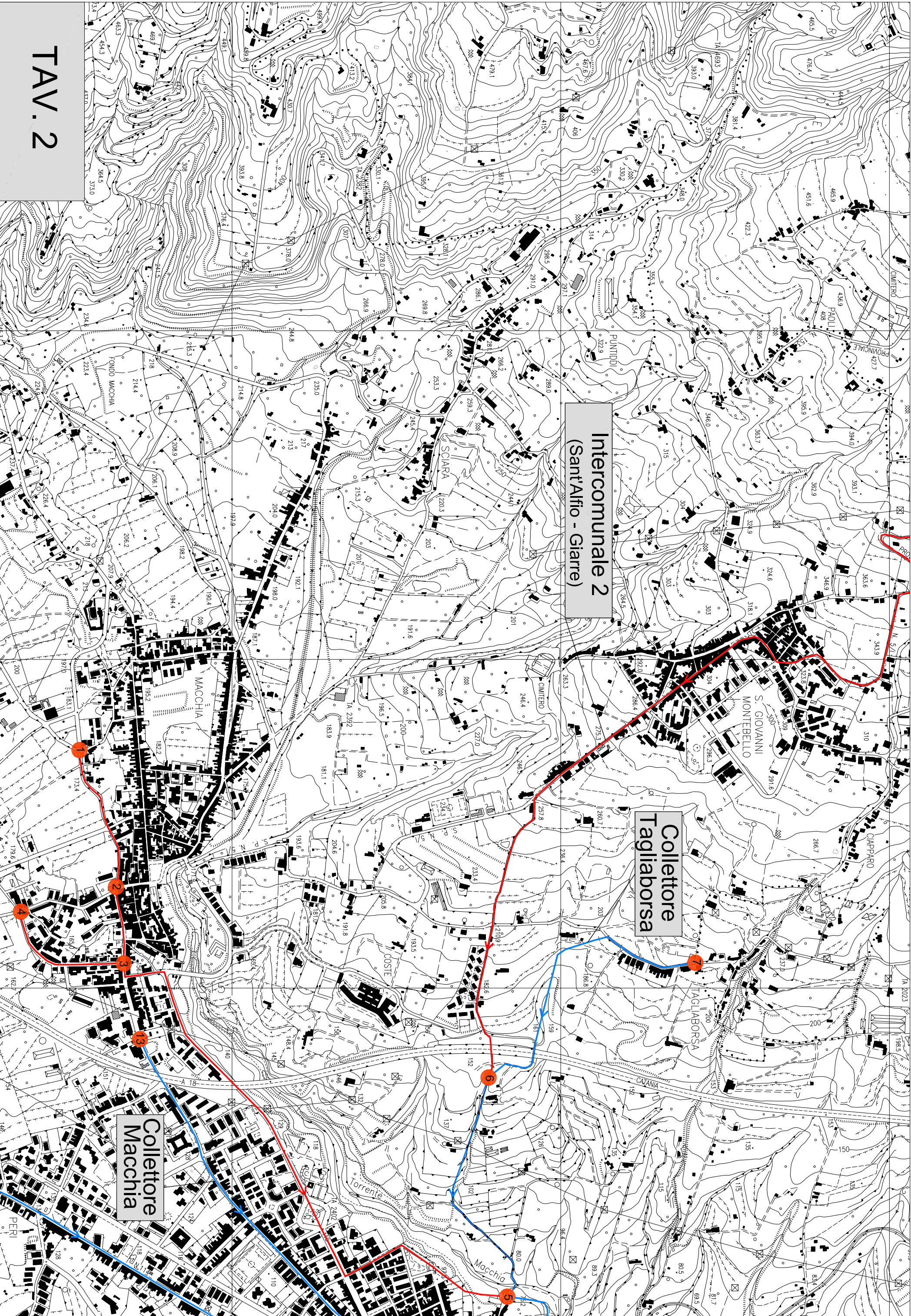
LEGENDA

-  Condotta esistente
-  Rete fognante interna in progetto
-  Condotta in progetto
-  Pozzetto di interconnessione, manovra e/o ispezione
-  Sollevamento in progetto
-  Stazione di pompaggio a mare
-  Impianto di depurazione Mascali

QUADRO DI UNIONE TAVOLE





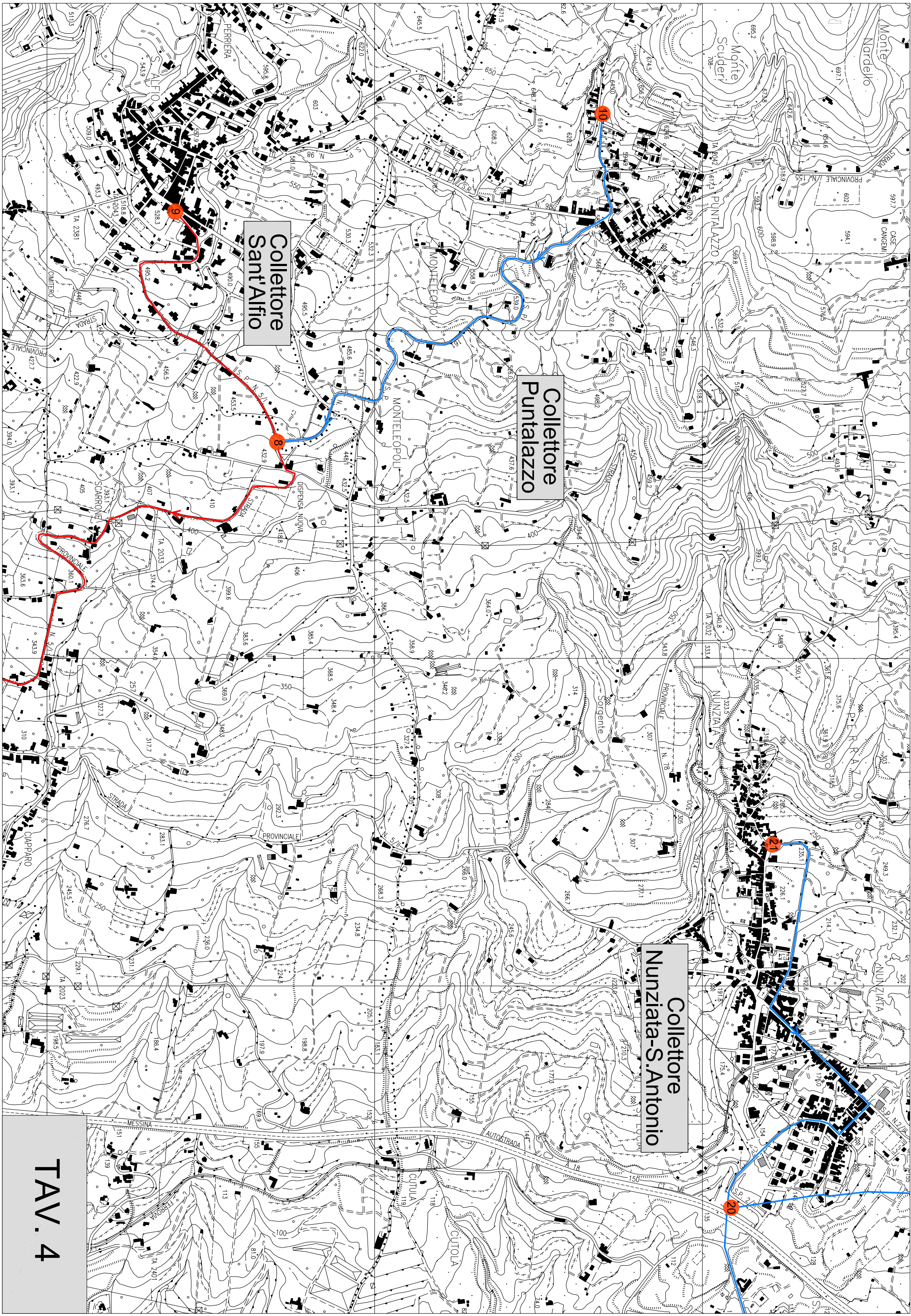




Emissario
Giarre

Emissario
Mascali

TAV. 3



Collettore
Sant'Alfio

Collettore
Puntalazzo

Collettore
Nunziata-S. Antonio

TAV. 4



TAV. 5



TAV. 7